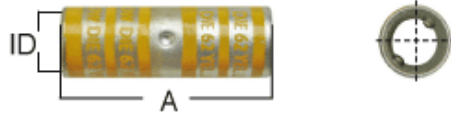


COMPRESSION CONNECTORS

Splices



| Cat. Nos | Wire Size | | Dimension (in.) | | Die Color | Die Code | Std. Pkg. |
|-----------|-----------|----------------------|-----------------|------|-----------|----------|-----------|
| | Code | Flex Class G,H,I,K,M | A | ID | | | |
| DS0821 | 8 AWG | — | 1.01 | 0.18 | RED | 21 | 100 |
| DS0821-50 | 8 AWG | — | 1.49 | 0.18 | RED | 21 | 100 |
| DS0821-60 | 8 AWG | — | 1.23 | 0.18 | RED | 21 | 100 |
| LS0821 | 8 AWG | — | 1.77 | 0.18 | RED | 21 | 100 |
| LS0821-50 | 8 AWG | — | 2.23 | 0.18 | RED | 21 | 100 |
| LS0821-60 | 8 AWG | — | 1.73 | 0.18 | RED | 21 | 100 |
| DS0624 | 6 AWG | — | 1.01 | 0.22 | BLUE | 24 | 100 |
| DS0624-50 | 6 AWG | — | 1.73 | 0.22 | BLUE | 24 | 100 |
| DS0624-60 | 6 AWG | — | 1.73 | 0.22 | BLUE | 24 | 100 |
| LS0624 | 6 AWG | — | 1.77 | 0.22 | BLUE | 24 | 100 |
| LS0624-50 | 6 AWG | — | 2.36 | 0.22 | BLUE | 24 | 100 |
| LS0624-60 | 6 AWG | — | 2.36 | 0.22 | BLUE | 24 | 100 |
| DS0429 | 4 AWG | — | 1.01 | 0.27 | GREY | 29 | 100 |
| DS0429-50 | 4 AWG | — | 1.73 | 0.28 | GREY | 29 | 100 |
| DS0429-60 | 4 AWG | — | 1.91 | 0.27 | GREY | 29 | 100 |
| LS0429 | 4 AWG | — | 1.77 | 0.27 | GREY | 29 | 100 |
| LS0429-50 | 4 AWG | — | 2.36 | 0.28 | GREY | 29 | 100 |
| LS0429-60 | 4 AWG | — | 2.52 | 0.27 | GREY | 29 | 100 |
| DS0233 | 2 AWG | — | 1.26 | 0.30 | BROWN | 33 | 100 |
| DS0233-50 | 2 AWG | — | 1.85 | 0.31 | BROWN | 33 | 100 |
| DS0233-60 | 2 AWG | — | 2.05 | 0.30 | BROWN | 33 | 100 |
| LS0233 | 2 AWG | — | 1.90 | 0.30 | BROWN | 33 | 100 |
| LS0233-50 | 2 AWG | — | 2.59 | 0.31 | BROWN | 33 | 100 |
| LS0233-60 | 2 AWG | — | 2.79 | 0.30 | BROWN | 33 | 100 |
| DS0137 | 1 AWG | — | 1.52 | 0.36 | GREEN | 37 | 100 |
| DS0137-50 | 1 AWG | — | 1.85 | 0.36 | GREEN | 37 | 100 |

COMPRESSION CONNECTORS

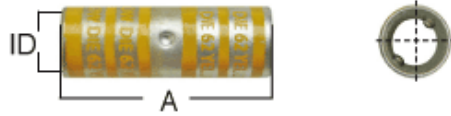
Splices



| Cat. Nos | Wire Size | | Dimension (in.) | | Die Color | Die Code | Std. Pkg. |
|-----------|-----------|----------------------|-----------------|------|-----------|----------|-----------|
| | Code | Flex Class G,H,I,K,M | A | ID | | | |
| DS0137-60 | 1 AWG | — | 2.04 | 0.36 | GREEN | 37 | 100 |
| LS0137 | 1 AWG | — | 2.02 | 0.36 | GREEN | 37 | 100 |
| LS0137-50 | 1 AWG | — | 2.84 | 0.36 | GREEN | 37 | 100 |
| LS0137-60 | 1 AWG | — | 3.04 | 0.36 | GREEN | 37 | 100 |
| DS1042 | 1/0 AWG | — | 1.65 | 0.40 | PINK | 42 | 100 |
| DS1042-50 | 1/0 AWG | — | 1.85 | 0.39 | PINK | 42 | 100 |
| DS1042-60 | 1/0 AWG | — | 2.06 | 0.40 | PINK | 42 | 100 |
| LS1042 | 1/0 AWG | — | 2.02 | 0.40 | PINK | 42 | 100 |
| LS1042-50 | 1/0 AWG | — | 2.84 | 0.39 | PINK | 42 | 100 |
| LS1042-60 | 1/0 AWG | — | 3.03 | 0.40 | PINK | 42 | 100 |
| DS2045 | 2/0 AWG | — | 1.77 | 0.44 | BLACK | 45 | 100 |
| DS2045-50 | 2/0 AWG | — | 1.98 | 0.45 | BLACK | 45 | 100 |
| DS2045-60 | 2/0 AWG | — | 2.15 | 0.44 | BLACK | 45 | 100 |
| LS2045 | 2/0 AWG | — | 2.15 | 0.44 | BLACK | 45 | 100 |
| LS2045-50 | 2/0 AWG | — | 3.10 | 0.45 | BLACK | 45 | 100 |
| LS2045-60 | 2/0 AWG | — | 3.27 | 0.44 | BLACK | 45 | 100 |
| DS3050 | 3/0 AWG | — | 1.77 | 0.51 | ORANGE | 50 | 100 |
| DS3050-41 | 3/0 AWG | — | 1.83 | 0.56 | ORANGE | 50 | 100 |
| DS3050-50 | 3/0 AWG | — | 2.10 | 0.51 | ORANGE | 50 | 100 |
| DS3060-60 | 3/0 AWG | — | 2.28 | 0.51 | ORANGE | 50 | 100 |
| LS3050 | 3/0 AWG | — | 2.27 | 0.51 | ORANGE | 50 | 100 |
| LS3050-50 | 3/0 AWG | — | 3.09 | 0.51 | ORANGE | 50 | 100 |
| LS3060-60 | 3/0 AWG | — | 3.27 | 0.51 | ORANGE | 50 | 100 |
| DS4054 | 4/0 AWG | — | 1.90 | 0.56 | PURPLE | 54 | 100 |
| DS4054-50 | 4/0 AWG | — | 2.10 | 0.57 | PURPLE | 54 | 100 |
| DS4054-60 | 4/0 AWG | — | 2.30 | 0.56 | PURPLE | 54 | 100 |

COMPRESSION CONNECTORS

Splices



| Cat. Nos | Wire Size | | Dimension (in.) | | Die Color | Die Code | Std. Pkg. |
|-----------|-----------|----------------------|-----------------|------|-----------|----------|-----------|
| | Code | Flex Class G,H,I,K,M | A | ID | | | |
| LS4054 | 4/0 AWG | — | 2.78 | 0.56 | PURPLE | 54 | 100 |
| LS4054-50 | 4/0 AWG | — | 3.34 | 0.57 | PURPLE | 54 | 100 |
| LS4054-60 | 4/0 AWG | — | 3.53 | 0.56 | PURPLE | 54 | 100 |
| DS2562 | 250 kcmil | — | 2.27 | 0.63 | YELLOW | 62 | 100 |
| DS2562-41 | 250 kcmil | — | 2.15 | 0.70 | YELLOW | 62 | 100 |
| DS2562-50 | 250 kcmil | — | 2.23 | 0.63 | YELLOW | 62 | 100 |
| DS2562-60 | 250 kcmil | — | 2.44 | 0.63 | YELLOW | 62 | 100 |
| LS2562 | 250 kcmil | — | 3.41 | 0.63 | YELLOW | 62 | 100 |
| LS2562-50 | 250 kcmil | — | 3.35 | 0.63 | YELLOW | 62 | 100 |
| LS2562-60 | 250 kcmil | — | 3.54 | 0.63 | YELLOW | 62 | 100 |
| DS3166 | 300 kcmil | — | 2.15 | 0.70 | WHITE | 66 | 100 |
| DS3166-50 | 300 kcmil | — | 2.23 | 0.65 | WHITE | 66 | 100 |
| DS3166-50 | 300 kcmil | — | 2.23 | 0.65 | WHITE | 66 | 100 |
| DS3166-60 | 300 kcmil | — | 2.45 | 0.65 | WHITE | 66 | 100 |
| DS3166-60 | 300 kcmil | — | 2.45 | 0.65 | WHITE | 66 | 100 |
| LS3166 | 300 kcmil | — | 3.54 | 0.70 | WHITE | 66 | 100 |
| LS3166 | 300 kcmil | — | 3.54 | 0.70 | WHITE | 66 | 100 |
| LS3166-50 | 300 kcmil | — | 4.08 | 0.65 | WHITE | 66 | 100 |
| LS3166-50 | 300 kcmil | — | 4.08 | 0.65 | WHITE | 66 | 100 |
| LS3166-60 | 300 kcmil | — | 4.30 | 0.65 | WHITE | 66 | 100 |
| LS3166-60 | 300 kcmil | — | 4.30 | 0.65 | WHITE | 66 | 100 |
| DS3571 | 350 kcmil | — | 2.27 | 0.75 | RED | 71 | 100 |
| DS3571 | 350 kcmil | — | 2.27 | 0.75 | RED | 71 | 100 |
| DS3571-50 | 350 kcmil | — | 2.35 | 0.70 | RED | 71 | 100 |
| DS3571-50 | 350 kcmil | — | 2.35 | 0.70 | RED | 71 | 100 |
| DS3571-60 | 350 kcmil | — | 2.57 | 0.75 | RED | 71 | 100 |

COMPRESSION CONNECTORS

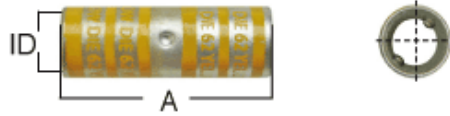
Splices



| Cat. Nos | Wire Size | | Dimension (in.) | | Die Color | Die Code | Std. Pkg. |
|-----------|-----------|----------------------|-----------------|------|-----------|----------|-----------|
| | Code | Flex Class G,H,I,K,M | A | ID | | | |
| DS3571-60 | 350 kcmil | — | 2.57 | 0.75 | RED | 71 | 100 |
| LS3571 | 350 kcmil | — | 3.79 | 0.75 | RED | 71 | 100 |
| LS3571 | 350 kcmil | — | 3.79 | 0.75 | RED | 71 | 100 |
| LS3571-50 | 350 kcmil | — | 4.08 | 0.70 | RED | 71 | 100 |
| LS3571-50 | 350 kcmil | — | 4.08 | 0.70 | RED | 71 | 100 |
| LS3571-60 | 350 kcmil | — | 4.31 | 0.75 | RED | 71 | 100 |
| LS3571-60 | 350 kcmil | — | 4.31 | 0.75 | RED | 71 | 100 |
| DS4176 | 400 kcmil | — | 2.78 | 0.79 | BLUE | 76 | 100 |
| DS4187-41 | 400 kcmil | — | 3.03 | 0.82 | BROWN | 87 | 100 |
| DS4176-50 | 400 kcmil | — | 2.48 | 0.76 | BLUE | 76 | 100 |
| DS4176-60 | 400 kcmil | — | 2.71 | 0.79 | BLUE | 76 | 100 |
| LS4176 | 400 kcmil | — | 3.79 | 0.79 | BLUE | 76 | 100 |
| LS4176 | 400 kcmil | — | 3.79 | 0.79 | BLUE | 76 | 100 |
| LS4176-50 | 400 kcmil | — | 4.33 | 0.76 | BLUE | 76 | 100 |
| LS4176-50 | 400 kcmil | — | 4.33 | 0.76 | BLUE | 76 | 100 |
| LS4176-60 | 400 kcmil | — | 4.57 | 0.79 | BLUE | 76 | 100 |
| LS4176-60 | 400 kcmil | — | 4.57 | 0.79 | BLUE | 76 | 100 |
| DS5187 | 500 kcmil | — | 2.78 | 0.88 | BROWN | 87 | 100 |
| DS5187 | 500 kcmil | — | 2.78 | 0.88 | BROWN | 87 | 100 |
| DS5187-50 | 500 kcmil | — | 2.84 | 0.84 | BROWN | 87 | 100 |
| DS5187-50 | 500 kcmil | — | 2.84 | 0.84 | BROWN | 87 | 100 |
| DS5187-60 | 500 kcmil | — | 3.12 | 0.88 | BROWN | 87 | 100 |
| DS5187-60 | 500 kcmil | — | 3.12 | 0.88 | BROWN | 87 | 100 |
| LS5187 | 500 kcmil | — | 4.80 | 0.88 | BROWN | 87 | 100 |
| LS5187 | 500 kcmil | — | 4.80 | 0.88 | BROWN | 87 | 100 |
| LS5187-50 | 500 kcmil | — | 4.57 | 0.84 | BROWN | 87 | 100 |

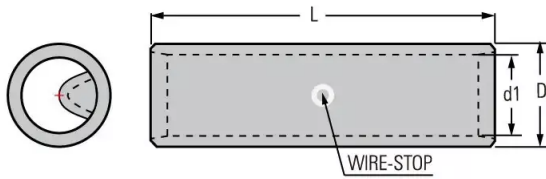
COMPRESSION CONNECTORS

Splices



| Cat. Nos | Wire Size | | Dimension (in.) | | Die Color | Die Code | Std. Pkg. |
|-----------|------------|----------------------|-----------------|------|-----------|----------|-----------|
| | Code | Flex Class G,H,I,K,M | A | ID | | | |
| LS5187-60 | 500 kcmil | — | 4.86 | 0.88 | BROWN | 87 | 100 |
| DS6194 | 600 kcmil | — | 3.03 | 0.96 | GREEN | 94 | 100 |
| DS6194-50 | 600 kcmil | — | 2.84 | 0.92 | GREEN | 94 | 100 |
| DS6194-60 | 600 kcmil | — | 3.19 | 0.96 | GREEN | 94 | 100 |
| LS6194 | 600 kcmil | — | 4.29 | 0.96 | GREEN | 94 | 100 |
| LS6194-50 | 600 kcmil | — | 5.45 | 0.92 | GREEN | 94 | 100 |
| LS6194-60 | 600 kcmil | — | 5.79 | 0.96 | GREEN | 94 | 100 |
| DS7199 | 700 kcmil | — | 3.28 | 0.97 | PINK | 99 | 100 |
| DS7199-41 | 700 kcmil | — | 3.03 | 0.97 | PINK | 99 | 100 |
| DS7199-60 | 700 kcmil | — | 3.19 | 0.97 | PINK | 99 | 100 |
| DS7561 | 750 kcmil | — | 3.03 | 1.06 | BLACK | 106 | 100 |
| DS7561-50 | 750 kcmil | — | 3.34 | 1.03 | BLACK | 106 | 100 |
| DS7561-60 | 750 kcmil | — | 3.68 | 1.06 | BLACK | 106 | 100 |
| LS7561 | 750 kcmil | — | 4.80 | 1.06 | BLACK | 106 | 100 |
| LS7561-41 | 750 kcmil | — | 5.05 | 1.06 | BLACK | 106 | 100 |
| LS7561-50 | 750 kcmil | — | 5.81 | 1.03 | BLACK | 106 | 100 |
| LS7561-60 | 750 kcmil | — | 6.32 | 1.06 | BLACK | 106 | 100 |
| LS9151 | 900 kcmil | — | 5.56 | 1.19 | YELLOW | 115 | 100 |
| DS1152 | 1000 kcmil | — | 3.67 | 1.25 | N/A | 125 | 100 |
| DS1152-50 | 1000 kcmil | — | 3.83 | 1.17 | N/A | 125 | 100 |
| DS1152-60 | 1000 kcmil | — | 4.24 | 1.25 | N/A | 125 | 100 |
| LS1152 | 1000 kcmil | — | 5.69 | 1.25 | N/A | 125 | 100 |
| LS1152-50 | 1000 kcmil | — | 6.06 | 1.17 | N/A | 125 | 100 |
| LS1152-60 | 1000 kcmil | — | 6.88 | 1.25 | N/A | 125 | 100 |

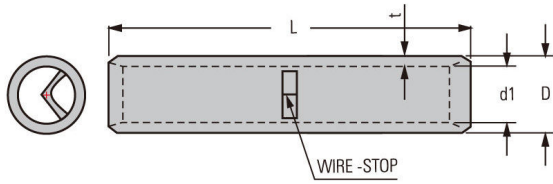
NON-INSULATED BUTT SPLICE CONNECTORS



| Cat. Nos | Application for Cable Size | | | Dimension(mm) | | | Std. Pkg. |
|----------|----------------------------|-----------|---------------------|---------------|------|------|-----------|
| | mm ² | A.W.G | Stripped Length(mm) | L | D | d1 | |
| GP6 | 4-6 | 12-10 | 10.00 | 25 | 5.5 | 4 | 100 |
| GP10 | 10 | 8 | 11.50 | 25 | 6.9 | 4.8 | 100 |
| GP16 | 16 | 6 | 12.50 | 29 | 7.8 | 5.8 | 100 |
| GP25 | 25 | 4 | 13.50 | 29 | 9.5 | 7.2 | 100 |
| GP35 | 35 | 2 | 15.50 | 35 | 11 | 8.3 | 100 |
| GP50 | 50 | 1/0 | 16.00 | 35 | 12.5 | 9.7 | 100 |
| GP70 | 70 | 2/0 | 18.00 | 45 | 15 | 11.7 | 100 |
| GP95 | 95 | 3/0 | 20.00 | 47 | 17 | 13.7 | 100 |
| GP120 | 120 | 4/0 | 22.00 | 52 | 20 | 15.8 | 100 |
| GP150 | 150 | 250/300 | 27.00 | 59 | 21 | 16.6 | 100 |
| GP185 | 185 | 300/350 | 30.00 | 65 | 23.5 | 18.5 | 100 |
| GP240 | 240 | 400/450 | 35.00 | 75 | 26.4 | 21.4 | 100 |
| GP300 | 300 | 500/600 | 42.50 | 90 | 28.6 | 23.6 | 100 |
| GP400 | 400 | 600/750 | 42.50 | 106 | 32.8 | 27 | 100 |
| GP500 | 500 | 800/1000 | 47.50 | 110 | 38.4 | 30 | 100 |
| GP630 | 630 | 1000/1250 | 47.50 | 110 | 44.7 | 34.5 | 100 |

COMPRESSION CONNECTORS

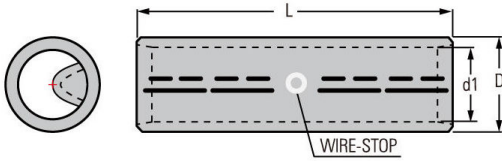
NON-INSULATED BUTT SPLICE CONNECTORS(SPY HOLE)



| Cat. Nos | Application for Cable Size | | | Dimension(mm) | | | Std. Pkg. |
|----------|----------------------------|-----------|---------------------|---------------|------|------|-----------|
| | mm ² | A.W.G | Stripped Length(mm) | L | D | d1 | |
| GK6 | 4-6 | 12-10 | 11.50 | 25 | 5.5 | 4 | 100 |
| GK10 | 10 | 8 | 11.50 | 25 | 6.9 | 4.8 | 100 |
| GK16 | 16 | 6 | 13.50 | 29 | 7.8 | 5.8 | 100 |
| GK25 | 25 | 4 | 13.50 | 29 | 9.5 | 7.2 | 100 |
| GK35 | 35 | 2 | 16.50 | 35 | 11 | 8.3 | 100 |
| GK50 | 50 | 1/0 | 16.50 | 35 | 12.5 | 9.7 | 100 |
| GK70 | 70 | 2/0 | 21.50 | 45 | 15 | 11.7 | 100 |
| GK95 | 95 | 3/0 | 22.50 | 47 | 17 | 13.7 | 100 |
| GK120 | 120 | 4/0 | 25.00 | 52 | 20 | 15.8 | 100 |
| GK150 | 150 | 250/300 | 28.50 | 59 | 21 | 16.6 | 100 |
| GK185 | 185 | 300/350 | 31.50 | 65 | 23.5 | 18.5 | 100 |
| GK240 | 240 | 400/450 | 36.50 | 75 | 26.4 | 21.4 | 100 |
| GK300 | 300 | 500/600 | 44.00 | 90 | 28.6 | 23.6 | 100 |
| GK400 | 400 | 600/750 | 52.00 | 106 | 32.8 | 27 | 100 |
| GK500 | 500 | 800/1000 | 54.00 | 110 | 38.4 | 30 | 100 |
| GK630 | 630 | 1000/1250 | 54.00 | 110 | 44.7 | 34.5 | 100 |

COMPRESSION CONNECTORS

NON-INSULATED BUTT SPLICE CONNECTORS(DIN46267-1)



| Cat. Nos | Application for Cable Size | | | Dimension(mm) | | | Std. Pkg. |
|----------|----------------------------|-----------|---------------------|---------------|------|-----|-----------|
| | mm ² | A.W.G | Stripped Length(mm) | L | D | d1 | |
| TD-L-6 | 4-6 | 12-10 | 14.50 | 4 | 5.5 | 30 | 100 |
| TD-L-10 | 10 | 8 | 14.50 | 4.5 | 6 | 30 | 100 |
| TD-L-16 | 16 | 6 | 24.50 | 5.7 | 8.5 | 50 | 100 |
| TD-L-25 | 25 | 4 | 24.50 | 7 | 10 | 50 | 100 |
| TD-L-35 | 35 | 2 | 24.50 | 8.4 | 12.5 | 50 | 100 |
| TD-L-50 | 50 | 1/0 | 27.50 | 10 | 14.5 | 56 | 100 |
| TD-L-70 | 70 | 2/0 | 27.50 | 11.7 | 16.5 | 56 | 100 |
| TD-L-95 | 95 | 3/0 | 34.00 | 13.5 | 19 | 70 | 100 |
| TD-L-120 | 120 | 4/0 | 34.00 | 15.7 | 21 | 70 | 100 |
| TD-L-150 | 150 | 250/300 | 39.00 | 17.2 | 23.5 | 80 | 100 |
| TD-L-185 | 185 | 300/350 | 41.50 | 19.3 | 25.5 | 85 | 100 |
| TD-L-240 | 240 | 400/450 | 44.00 | 21.8 | 29 | 90 | 100 |
| TD-L-300 | 300 | 500/600 | 49.00 | 24.8 | 32 | 100 | 100 |
| TD-L-400 | 400 | 600/750 | 74.00 | 27.8 | 38.5 | 150 | 100 |
| TD-L-500 | 500 | 800/1000 | 79.00 | 31.4 | 42 | 160 | 100 |
| TD-L-625 | 630 | 1000/1250 | 79.00 | 34.5 | 44 | 160 | 100 |